

# Year 9 Art Knowledge Organiser -Term 2

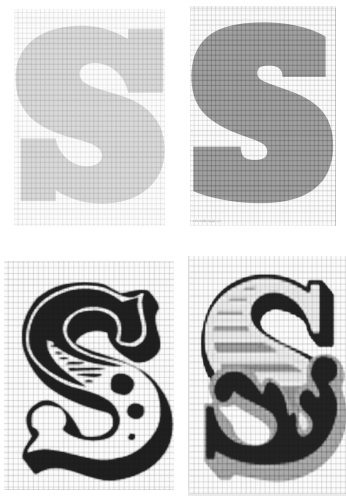
## Drawing for Design

Design drawings, often the first visual representation of a project, are preliminary sketches and plans meticulously crafted by architects and engineers. These drawings encompass a range of details, from broad conceptual ideas to intricate specifications, all aimed at bringing a vision to life on paper.

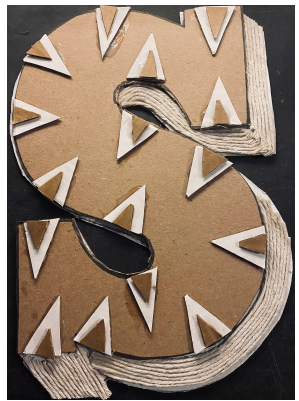
### Circus Font



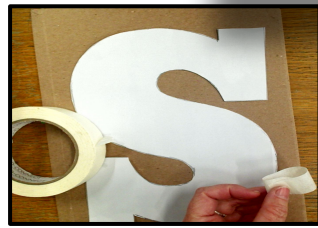
### Examples of font styles



## Relief



### Embellish



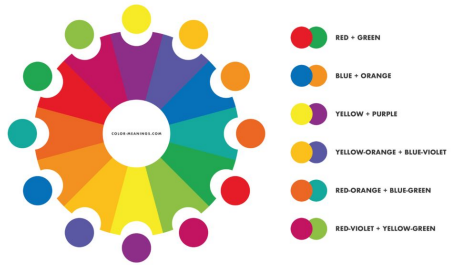
### Templates

### Harmonious Colours



Harmonious colours sit next to each other on the colour wheel. These colours work well together and can be blended into each other.

### COMPLEMENTARY COLORS



## Year 9 key words

Design	A design is the concept of or proposal for an object, process, or system.
Complementary colours	Colours that are opposite on the colour wheel.
Acrylic	Acrylic paint is a fast-drying paint made of pigment suspended in acrylic polymer emulsion
Template	A design, mold or model used as a guidance to create the same design or shape with precision.
Score	To cut or mark with a line, scratch, or notch I scored the wood with a knife.
Relief	A relief carving is a sculpture with figures that protrude from a background, but are still attached to it.
Embellish	make (something) more attractive by the addition of decorative details or features.

# Year 9 Talking with Type: Typography/ Graffiti Timeline

