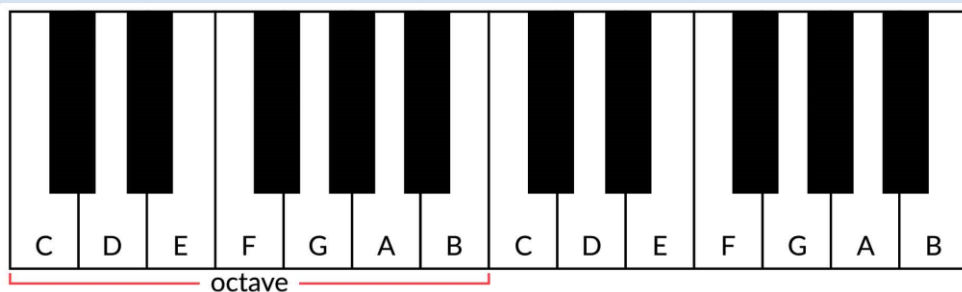


KEYBOARD SKILLS

Exploring Treble Clef Reading and Notation



A. Layout of a Keyboard/Piano



A piano or keyboard is laid out with **WHITE KEYS** and **Black Keys** (see section G). C is to the left of the two Black Keys and the notes continue to G then they go back to A again. Notes with the same letter name/pitch are said to be an **OCTAVE** apart. **MIDDLE C** is normally in the centre of a piano keyboard.

D. Keyboard Functions

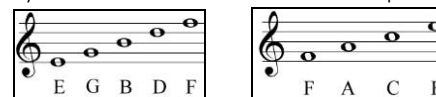


B. Treble Clef & Treble Clef Notation

A **STAVE** or **STAFF** is the name given to the five lines where musical notes are written. The position of notes on the staff or staff shows their **PITCH** (how high or low a note is). The **TREBLE CLEF** is a symbol used to show high-pitched notes on the staff and is *usually* used for the right hand on a piano or keyboard to play the **MELODY** and also used by high pitched instruments such as the flute and violin. The staff or staff is made up of 5 **LINES** and 4 **SPACES**.



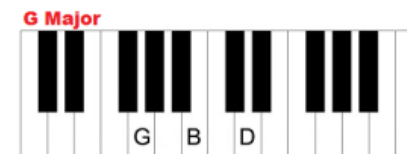
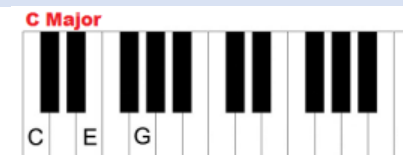
Every Green Bus Drives Fast. Notes in the **SPACES** spell "FACE"



Notes from **MIDDLE C** going up in pitch (all of the white notes) are called a **SCALE**.

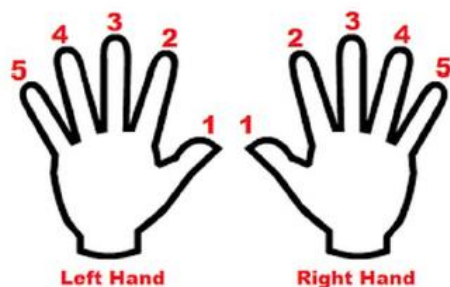


C. Keyboard Chords



Play one – Miss one – play one – miss one – play one

E. Left Hand/Right Hand (1-5)



F. Black Keys and Sharps and Flats

There are five different black notes or keys on a piano or keyboard. They occur in groups of two and three right up the keyboard in different pitches. Each one can be a **SHARP** or a **FLAT**. The # symbol means a **SHARP** which raises the pitch by a semitone (e.g. C# is higher in pitch (to the right) than C). The b symbol means a **FLAT** which lowers the pitch by a semitone (e.g. Bb is lower in pitch (to the left) than B). Each black key has 2 names – C# is the same as Db – there's just two different ways of looking at it! Remember, black notes or keys that are to the **R**IGHT of a white note are called **SHARPS** and black notes to the **L**EFT of a white note are called **FLATS**.

