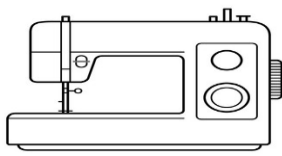


A plan or drawing produced to show the look and function of a product.  
a decorative pattern



## TEXTILES

- In Year 7 we will DESIGN a Pattern for the front of the pencil wrap
- You will DESIGN a stencil to use as a repeat template

1. Pattern
2. Motif
3. Arrangement

## PATTERN



### Pattern

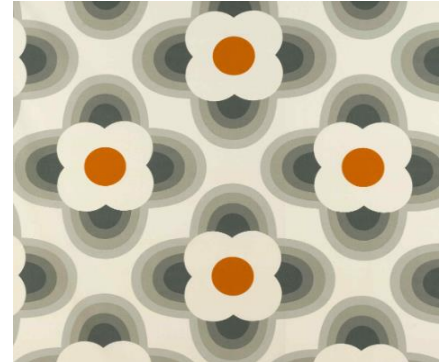
- Repeat: Is the amount of space from where a pattern begins, and then begins again.
- Types of pattern repeat: Block Repeat, Half Drop Pattern Repeat, Brick Pattern Repeat, Random Pattern Repeat.



Block Repeat



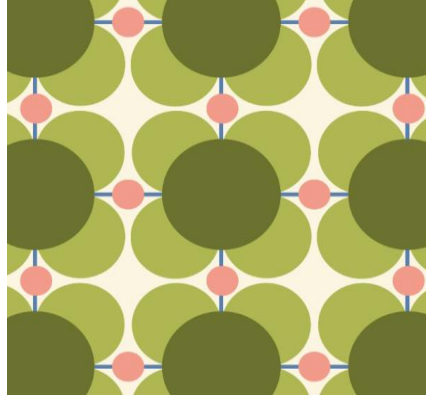
Half Drop Pattern Repeat



Brick Pattern Repeat



Random Pattern Repeat



Block Repeat



Block Repeat



### Quality

- The grade of excellence
- How good something is
  - How good it looks
  - How well the pattern repeats



### High Quality

- The very best
- Highest standard

### Skilful

- Confident to undertake the task without support
- Task completed correctly



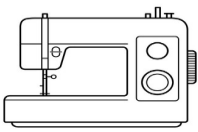
### Skill

- An ability that comes from training
  - Something you can get better at
- The skills in this project are:  
Drawing 2D shapes, pattern repeats, applying colour.

### When Designing a pattern:

1. Extract 2D organic and geometric shapes
2. Create a template of the shape to be repeated
3. Consider how the pattern will repeat i.e. Block, 1/2 drop etc
4. Think about the type of product the pattern will be used on

- To look at
- To examine in detail to explain and interpret



- In Year 7 we will ANALYSE a the designer MILTON GLASER
- You will ANALYSE his designs to create a patten design of your own

## TEXTILES

1. Psychedelic
2. intense colours
3. wiggling lines
4. blending of objects that appear to be melting and oozing into each other

## ANALYSE

Psychedelic design is an art form that tends to have intense colours, free-flowing lines, and kaleidoscopic patterns

### Milton Glaser Design

**Bold Colours:**  
Milton often used vibrant and contrasting colours.



### Founder's Philosophy:

Milton Glaser, felt that as a designer he was in the business of persuasion and could bring about change. He aspired to put his skills towards a worthy cause, even if success was not guaranteed.

### History

Milton was born in The Bronx, New York City. His parents, were Hungarian Jewish immigrants. The family resided in the South Bronx. His father owned a dry-cleaning and tailoring shop; his mother was a homemaker.

### Inspiration

Italian painter Giorgio Morandi, influenced Glaser. "Morandi was one of those artists who, the longer you look at him, the more you grow in your appreciation, the more you understand," Glaser said

### Impact

Milton Glaser is credited for the creation of the famous Push Pin movement which is characterized by strong outlines, bright colours, and slightly exaggerated forms.

### Legacy:

One of Glaser's most recognizable works is his 'I Love New York' logo. It's aim was to increase tourism as New York was seen to be a dangerous place to visit.

### Key Products:

In 1966, Glaser designed a poster for *Bob Dylan's Greatest Hits*. It was one of Glaser's first posters. The poster shows the profile of Dylan's face with psychedelic, swirly hair, with "Dylan" written at the bottom in Baby Teeth, one of Glaser's typefaces.

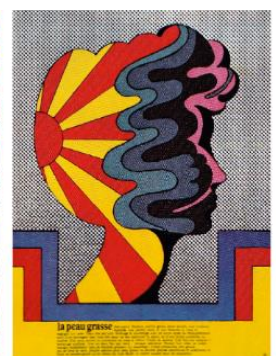
### Global Reach:

Throughout his career, Glaser has been a creator of posters and prints. His artwork has been featured in exhibits worldwide, including one-man shows at both the Centre Georges Pompidou in Paris and the Museum of Modern Art in New York.

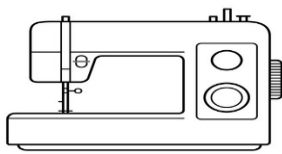
### Relevance Today:

Again and again, he stressed the importance of continuing to learn. "We are all born with genius," he said. "It's like our fairy godmother. But what happens in life is that we stop listening to our inner voices, and we no longer have access to this extraordinary ability to create."

**Organic Patterns:**  
Use of Organic shapes and patterns, including wavy and curved lines.



To put together  
Practical activity



- In Year 7 we will be **making** a Pencil Wrap
- You will use tools to **make** the parts
- It will be **made** from Cotton

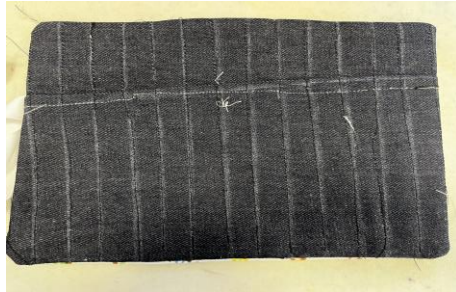
## TEXTILES

1. Assemble
2. Build
3. Construct

## MAKE

### Cotton

- Natural
- Grows on a plant
- Absorbent; will soak up liquid
- Can be dyed lots of different colours



### Pencil wrap

- **Parallel:** My pouches are parallel; this means the sewn lines are the same distance apart
- **Seam allowance:** The main parts have been sewn using a seam allowance of 1.5cm; this means they are strong and won't come apart



### High Quality

- The very best
- Highest standard

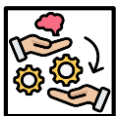


### Quality

- The grade of excellence
- How good something is
  - How good it looks
  - How well it is made

### Skilful

- Confident to undertake the task without support
- Task completed correctly



### Skill

- An ability that comes from training
- Something you can get better at

The skills in this project are:  
Measuring / Sewing in a straight line ,  
sewing 90-degree corners, Hand sewing

When sewing use a;  
Sewing Machine



1. Sharp needle
2. Take-up lever pulls the thread through the machine
3. Different types of stitch patterns
4. Used to sew lots of different types of fabrics
5. Balance wheel can move the position of the needle

